

MASTERNODE.oe

enhancing the internet of value



Enhancing the internet of value for the equitable distribution of wealth.



Index

Wealth redistribution, the story	5
Once upon a time...	5
The miracle of wealth creation	7
For free money, we need to free money	8
The equitable distribution of wealth	9
Community?	10
From market values to shared values	10
Warding off value	11
Embracing values	12
Value chain: marketing	13
Values chain: commoning	14
Transvestment	15
What are we?	17
Infrastructure	17
Liquidity	18
Insights	18
Culture	19
Structure	20

Masternode.one BV

Corporate HQ EMEA	Research HQ EMEA	Infrastructure NQ EMEA	Infrastructure NQ Americas	Infrastructure NQ APAC	Infrastructure NQ APAC
Euronext AEX Beursplein 5 1012 JW Amsterdam the Netherlands	Javatoren Stationsstraat 11 7607 GX Almelo the Netherlands	Equinix IB Schepenbergweg 42 1105 AT Amsterdam the Netherlands	Digital Reality 111 8th Avenue NY 10011 New York United States of America	NTT Communications Jalan Kuningan Barat No. 8 RT.1/RW.2, West Kuningan Mampang Prapatan Jakarta, Indonesia	AT Tokyo Chuo Data Center 6 Chome-2-12 Koto City Tokyo 135-0061, Japan
<i>info [at] masternode.one</i>	<i>research [at] masternode.one</i>	<i>emea [at] masternode.one</i>	<i>americas [at] masternode.one</i>	<i>apac1 [at] masternode.one</i>	<i>apac2 [at] masternode.one</i>



Headquarters Amsterdam, the Netherlands	21
The birth of stock trading	22
400 years later, nanoseconds faster	23
Research quarters Almelo, the Netherlands	24
From Java to the JAVA Tower	25
From industrial revolution to circular economy	26
Hyper connected, low latency	26
Welcome	27
Working @ Masternode.one	28
Decentralized	29
Fringe Benefits	29
Alternative reward structure	30
The application application	31
Your first week, onboarding	32
Your second week, discovery	32
Your third week, go!	33

Masternode.one BV

Corporate HQ EMEA	Research HQ EMEA	Infrastructure NQ EMEA	Infrastructure NQ Americas	Infrastructure NQ APAC	Infrastructure NQ APAC
Euronext AEX Beursplein 5 1012 JW Amsterdam the Netherlands	Javatoren Stationsstraat 11 7607 GX Almelo the Netherlands	Equinix IB Schepenbergweg 42 1105 AT Amsterdam the Netherlands	Digital Reality 111 8th Avenue NY 10011 New York United States of America	NTT Communications Jalan Kuningan Barat No. 8 RT.1/RW.2, West Kuningan Mampang Prapatan Jakarta, Indonesia	AT Tokyo Chuo Data Center 6 Chome-2-12 Koto City Tokyo 135-0061, Japan
<i>info [at] masternode.one</i>	<i>research [at] masternode.one</i>	<i>emea [at] masternode.one</i>	<i>americas [at] masternode.one</i>	<i>apac1 [at] masternode.one</i>	<i>apac2 [at] masternode.one</i>



SDG #1, no poverty	34
Introduce us to your activity	34
We already support the following activities	35
Amani for Africa	35
Think volunteer	35
National Association de Zonnebloem	36
No Guts, No glory	36
A word from Think Volunteer...	37
Masternode.one supports the Think Volunteer Foundation	38
Think Volunteer	38
Think Volunteer Academy	39
Cryptocurrency and our platform	39
Support	40
Once upon a time,	41

Masternode.one BV

Corporate HQ EMEA	Research HQ EMEA	Infrastructure NQ EMEA	Infrastructure NQ Americas	Infrastructure NQ APAC	Infrastructure NQ APAC
Euronext AEX Beursplein 5 1012 JW Amsterdam the Netherlands	Javatoren Stationsstraat 11 7607 GX Almelo the Netherlands	Equinix IB Schepenbergweg 42 1105 AT Amsterdam the Netherlands	Digital Reality 111 8th Avenue NY 10011 New York United States of America	NTT Communications Jalan Kuningan Barat No. 8 RT.1/RW.2, West Kuningan Mampang Prapatan Jakarta, Indonesia	AT Tokyo Chuo Data Center 6 Chome-2-12 Koto City Tokyo 135-0061, Japan
<i>info [at] masternode.one</i>	<i>research [at] masternode.one</i>	<i>emea [at] masternode.one</i>	<i>americas [at] masternode.one</i>	<i>apac1 [at] masternode.one</i>	<i>apac2 [at] masternode.one</i>



Wealth redistribution, the story

In a world where borders are becoming increasingly blurred, where globalization is at its peak and wealth is expendable, traditional financial markets are on the brink of collapse. While fiduciary valuta depreciates at a fast pace as the gap between rich and poor widens exponentially, modern human civilization is inclined to only take one's wealth into account on the subject of economic prosperity. While, especially in today's world, it also and above all includes one's well-being.

Once upon a time...



Saturday February 12, 1983 to be exact. A baby was born in an orphanage somewhere in Jakarta (former Batavia), Indonesia. A few months later, the [baby](#) was handed over by his mother to a wonderful Dutch couple. That child grew up in the Netherlands, a country with a long history of mercantilism and entrepreneurship. Grateful for the many opportunities this country offered him to develop his own identity, he also learned that this same country was partly responsible for the poverty in his native country. He realized that this is why he was separated from his biological mother. He decided that this should never happen again and so he embarked on his life mission...

Masternode.one BV

Corporate HQ EMEA	Research HQ EMEA	Infrastructure NQ EMEA	Infrastructure NQ Americas	Infrastructure NQ APAC	Infrastructure NQ APAC
Euronext AEX Beursplein 5 1012 JW Amsterdam the Netherlands	Javatoren Stationsstraat 11 7607 GX Almelo the Netherlands	Equinix IB Schepenbergweg 42 1105 AT Amsterdam the Netherlands	Digital Reality 111 8th Avenue NY 10011 New York United States of America	NTT Communications Jalan Kuningan Barat No. 8 RT.1/RW.2, West Kuningan Mampang Prapatan Jakarta, Indonesia	AT Tokyo Chuo Data Center 6 Chome-2-12 Koto City Tokyo 135-0061, Japan
info [at] masternode.one	research [at] masternode.one	emea [at] masternode.one	americas [at] masternode.one	apac1 [at] masternode.one	apac2 [at] masternode.one



Why?

*The equitable distribution of wealth
for the benefit of everyone's future perspective
and well-being.*

How?

By enhancing the internet of value.

Masternode.one BV

Corporate HQ EMEA	Research HQ EMEA	Infrastructure NQ EMEA	Infrastructure NQ Americas	Infrastructure NQ APAC	Infrastructure NQ APAC
Euronext AEX Beursplein 5 1012 JW Amsterdam the Netherlands	Javatoren Stationsstraat 11 7607 GX Almelo the Netherlands	Equinix IB Schepenbergweg 42 1105 AT Amsterdam the Netherlands	Digital Reality 111 8th Avenue NY 10011 New York United States of America	NTT Communications Jalan Kuningan Barat No. 8 RT.1/RW.2, West Kuningan Mampang Prapatan Jakarta, Indonesia	AT Tokyo Chuo Data Center 6 Chome-2-12 Koto City Tokyo 135-0061, Japan
<i>info [at] masternode.one</i>	<i>research [at] masternode.one</i>	<i>emea [at] masternode.one</i>	<i>americas [at] masternode.one</i>	<i>apac1 [at] masternode.one</i>	<i>apac2 [at] masternode.one</i>



The miracle of wealth creation

The wonder of wealth creation brought about by the modern ages, is hooked in the legacy of the financial and monetary systems introduced in the Dutch Golden Age by the VOC, the United East-India Company. Money is not free, it is trapped in the maze of large funds, insurers, financiers and big banks. The markets of yesteryear still operate on the basis of middlemen and insiders, through back-rooms where you win before you start, and once you win, you are too big to fail. Financial empires today are built on limited access and inefficiency, backed by king-making regulations. The system as such is bloated, slow and downright hostile to innovation, inclusion, and wellbeing.



Simply put, money is not free...

Masternode.one BV

Corporate HQ EMEA	Research HQ EMEA	Infrastructure NQ EMEA	Infrastructure NQ Americas	Infrastructure NQ APAC	Infrastructure NQ APAC
Euronext AEX Beursplein 5 1012 JW Amsterdam the Netherlands	Javatoren Stationsstraat 11 7607 GX Almelo the Netherlands	Equinix IB Schepenbergweg 42 1105 AT Amsterdam the Netherlands	Digital Reality 111 8th Avenue NY 10011 New York United States of America	NTT Communications Jalan Kuningan Barat No. 8 RT.1/RW.2, West Kuningan Mampang Prapatan Jakarta, Indonesia	AT Tokyo Chuo Data Center 6 Chome-2-12 Koto City Tokyo 135-0061, Japan
info [at] masternode.one	research [at] masternode.one	emea [at] masternode.one	americas [at] masternode.one	apac1 [at] masternode.one	apac2 [at] masternode.one



For free money, we need to free money



When Satoshi Nakamoto published the Bitcoin whitepaper in 2008, he started a real free money revolution. The concept of distributed ledger technology has the potential to create a world where a bag of rice should cost the same anywhere in the world, and a live whale has more economic value than a dead one. A world where wealth means well-being without the visceral need for financial freedom. A world where people can exchange value regardless of origin, gender, or religion without intermediaries or trusted third parties via a free, safe, and transparent internet.

An internet where value is distributed peer to peer without fearing the internet's oldest problem: double-spending. A permissionless and transparent internet where techniques prosper for achieving a net "exvestment" of resources from capitalist value-extraction enterprises and structures to autonomous (commons-based) ones. An internet where the transfer and use of value from one system of production to another can be described as "transvestment", in the ideas of software developer Dmytri Kleiner and media artist Baruch Gottlieb, who founded this term. They described a kind of "reverse co-optation", in which capitalist enterprises become dependent upon commons value-generation; an internet that shifts investment from capitalist enterprises to commons-based alternatives and 'Creates a flow of value from the system of capital to the system of the commons economy...'

The internet of value...

Masternode.one BV

Corporate HQ EMEA	Research HQ EMEA	Infrastructure NQ EMEA	Infrastructure NQ Americas	Infrastructure NQ APAC	Infrastructure NQ APAC
Euronext AEX Beursplein 5 1012 JW Amsterdam the Netherlands	Javatoren Stationsstraat 11 7607 GX Almelo the Netherlands	Equinix IB Schepenbergweg 42 1105 AT Amsterdam the Netherlands	Digital Reality 111 8th Avenue NY 10011 New York United States of America	NTT Communications Jalan Kuningan Barat No. 8 RT.1/RW.2, West Kuningan Mampang Prapatan Jakarta, Indonesia	AT Tokyo Chuo Data Center 6 Chome-2-12 Koto City Tokyo 135-0061, Japan
info [@] masternode.one	research [@] masternode.one	emea [@] masternode.one	americas [@] masternode.one	apac1 [@] masternode.one	apac2 [@] masternode.one



The equitable distribution of wealth

Therefore,

in order to enhance the internet of value,
our mission is to distribute wealth
more equitably across the globe
by accumulating and re-distributing digital assets
against competitive quotes
via products and partners
that helps you secure your future perspective.

That's why we provide infrastructure for,
liquidity in,
and insights into
decentralized markets
via our full-scale global operation,
rich datasets,
algorithmic execution engine,
and durable products.

Founded in 2018
as a proprietary trading, technology, and research firm
focused on digital assets
and decentralized markets.

We are now Masternode.one

Masternode.one BV

Corporate HQ EMEA	Research HQ EMEA	Infrastructure NQ EMEA	Infrastructure NQ Americas	Infrastructure NQ APAC	Infrastructure NQ APAC
Euronext AEX Beursplein 5 1012 JW Amsterdam the Netherlands	Javatoren Stationsstraat 11 7607 GX Almelo the Netherlands	Equinix IB Schepenbergweg 42 1105 AT Amsterdam the Netherlands	Digital Reality 111 8th Avenue NY 10011 New York United States of America	NTT Communications Jalan Kuningan Barat No. 8 RT.1/RW.2, West Kuningan Mampang Prapatan Jakarta, Indonesia	AT Tokyo Chuo Data Center 6 Chome-2-12 Koto City Tokyo 135-0061, Japan
<i>info [at] masternode.one</i>	<i>research [at] masternode.one</i>	<i>emea [at] masternode.one</i>	<i>americas [at] masternode.one</i>	<i>apac1 [at] masternode.one</i>	<i>apac2 [at] masternode.one</i>



Community?

From market values to shared values,
from commodities to communities

Transvestment shifts linear resources and capital to circular directions for co-created livelihoods

Our human world is in transition, as part of a rapidly changing natural environment. Global and local developments are accelerating and reinforcing each other. Our world seems to become rather chaotic, but it is in fact an ongoing transformation. We are at the brink of a more horizontal world, opportunities are coming together. The effect seems to become “glocality”, ultimately culminating into “continentalization”. Finally, our growing network society offers many possibilities to alter the old linear way of how we were related to our environment, to mother nature in general. And to assets and capital specifically, those traditional forms of economics. The main ongoing change is our passage to sense-making and circular ecologies. Resources and money are starting to flow in other directions.

Transvestment will speed up this fundamental alteration because transvestment shifts capitalist assets to commons-based alternatives. Value from a dominant economic system of production is now transferred to a free social-ecological system of collaboration, cooperation, and co-creation. In peer-to-peer communities these assets are contributing to purposeful thriving and flourishing of human values. Our well-being is then also equally balancing nature. New-economic value is regenerative, not generative and destructive like the old-economic value. Earth will have ecological “wealth” instead of economical “worth”. The “market value” is transformed into “shared values”; “marketing” has become “commoning”; and “commodities” have become “communities”.

Masternode.one BV

Corporate HQ EMEA	Research HQ EMEA	Infrastructure NQ EMEA	Infrastructure NQ Americas	Infrastructure NQ APAC	Infrastructure NQ APAC
Euronext AEX Beursplein 5 1012 JW Amsterdam the Netherlands	Javatoren Stationsstraat 11 7607 GX Almelo the Netherlands	Equinix IB Schepenbergweg 42 1105 AT Amsterdam the Netherlands	Digital Reality 111 8th Avenue NY 10011 New York United States of America	NTT Communications Jalan Kuningan Barat No. 8 RT.1/RW.2, West Kuningan Mampang Prapatan Jakarta, Indonesia	AT Tokyo Chuo Data Center 6 Chome-2-12 Koto City Tokyo 135-0061, Japan
info [at] masternode.one	research [at] masternode.one	emea [at] masternode.one	americas [at] masternode.one	apac1 [at] masternode.one	apac2 [at] masternode.one



Warding off value

The present dominant economical chain of value creation is based on extraction. In this way the raw materials of mother Earth, the differentiated products of producers, and the differentiated services of suppliers all have become commodities. The next link in this value-chain will soon be differentiated and become commodities as well: our individual experiences in the present “experience economy”. Nevertheless, the final link in this value-chain can not be commoditized, because personal transformations automatically ward off commoditization, according to business thought leader and writer Joe Pine (1958): ‘In the nascent transformation economy, the customer is the product, and the transformation is an aid in changing the traits of the person who buys it. Transformations that affect this kind of change, automatically ward off commoditization, because there can be no greater differentiation than a transformed person’. This chain results in a rather solistic reality for individuals.

Masternode.one BV

Corporate HQ EMEA	Research HQ EMEA	Infrastructure NQ EMEA	Infrastructure NQ Americas	Infrastructure NQ APAC	Infrastructure NQ APAC
Euronext AEX Beursplein 5 1012 JW Amsterdam the Netherlands	Javatoren Stationsstraat 11 7607 GX Almelo the Netherlands	Equinix IB Schepenbergweg 42 1105 AT Amsterdam the Netherlands	Digital Reality 111 8th Avenue NY 10011 New York United States of America	NTT Communications Jalan Kuningan Barat No. 8 RT.1/RW.2, West Kuningan Mampang Prapatan Jakarta, Indonesia	AT Tokyo Chuo Data Center 6 Chome-2-12 Koto City Tokyo 135-0061, Japan
<i>info [at] masternode.one</i>	<i>research [at] masternode.one</i>	<i>emea [at] masternode.one</i>	<i>americas [at] masternode.one</i>	<i>apac1 [at] masternode.one</i>	<i>apac2 [at] masternode.one</i>



Embracing values

Although experiences are mainly individual, and although transformation is utmost personal, parallel to this economic value-chain is another chain: a non-economic values-chain, in which the links do not lead to more and more mass-customization but to more and more joint collectiveness, to commoning based on a conversational dialogue. There, the customer and nature are no longer the product, but both are valued based on meaning that makes sense to all. According to philosopher and writer Jean-Paul Sartre (1905 - 1980), life has no value a priori: 'It is up to you to give life a meaning, and value is nothing but the meaning that you choose'. So, let's choose meaning that makes sense in a shared environment and in shared communities. When we value a "balanced nature" instead of the "unbalanced capital", when we re-value captivated resources into shared assets, when we finally value the integrated and systemic wholeness of our living environment, then all these interrelations of ourselves as "inter-beings" will start to create another human world on this planet Earth. Without the present commoditization of people, of our vulnerable society, and of our precious spaceship at large.

Masternode.one BV

Corporate HQ EMEA	Research HQ EMEA	Infrastructure NQ EMEA	Infrastructure NQ Americas	Infrastructure NQ APAC	Infrastructure NQ APAC
Euronext AEX Beursplein 5 1012 JW Amsterdam the Netherlands	Javatoren Stationsstraat 11 7607 GX Almelo the Netherlands	Equinix IB Schepenbergweg 42 1105 AT Amsterdam the Netherlands	Digital Reality 111 8th Avenue NY 10011 New York United States of America	NTT Communications Jalan Kuningan Barat No. 8 RT.1/RW.2, West Kuningan Mampang Prapatan Jakarta, Indonesia	AT Tokyo Chuo Data Center 6 Chome-2-12 Koto City Tokyo 135-0061, Japan
<i>info [at] masternode.one</i>	<i>research [at] masternode.one</i>	<i>emea [at] masternode.one</i>	<i>americas [at] masternode.one</i>	<i>apac1 [at] masternode.one</i>	<i>apac2 [at] masternode.one</i>



Value chain: marketing

According to cyber philosopher and writer Michel Bauwens (1958), transvestments help commons-based forms to accept capital while being used to advance collective purposes: 'Through peer production new commons and market forms will be developed. Transvestment creates a flow of value from the system of capital to the system of the commons economy. Instead of the co-optation of the commons economy by capital – in the form of the netarchical capitalist platforms which capture value from the commons – transvestment co-opts capital inside the commons, and subjects it to their community practices'. The most important effect is that people will self-identify as "commoners", rather than as "human resources" or as "labored commodities", because that would per definition create a traditional market-oriented identity. Instead, the members of the growing community lead themselves to a future-bound shared values-based identity. Michel Bauwens is convinced of the positive outcome of these rising dynamics: 'Market exchange and commoning can be constructively conjoined. As capitalism faces a series of structural crises, a new social, political, and economic dynamic is emerging. Peer-to-peer communities are types of social relations in human networks, as well as technological infrastructures that make the generalization and scaling up of such relations possible. Thus, peer-to-peer enables a new mode of production and creates the potential for a transition to a commons-oriented economy. With "value sovereignty" of all commoners. And by sharing physical resources, avoiding waste, and localizing production'. In other words: sharing for caring.

Masternode.one BV

Corporate HQ EMEA	Research HQ EMEA	Infrastructure NQ EMEA	Infrastructure NQ Americas	Infrastructure NQ APAC	Infrastructure NQ APAC
Euronext AEX Beursplein 5 1012 JW Amsterdam the Netherlands	Javatoren Stationsstraat 11 7607 GX Almelo the Netherlands	Equinix IB Schepenbergweg 42 1105 AT Amsterdam the Netherlands	Digital Reality 111 8th Avenue NY 10011 New York United States of America	NTT Communications Jalan Kuningan Barat No. 8 RT.1/RW.2, West Kuningan Mampang Prapatan Jakarta, Indonesia	AT Tokyo Chuo Data Center 6 Chome-2-12 Koto City Tokyo 135-0061, Japan
<i>info [at] masternode.one</i>	<i>research [at] masternode.one</i>	<i>emea [at] masternode.one</i>	<i>americas [at] masternode.one</i>	<i>apac1 [at] masternode.one</i>	<i>apac2 [at] masternode.one</i>



Values chain: commoning

While the economical “value-chain” focuses on linear value-chain management, the circular contactual “values-chain” offers openness for individual or collective cognition raising, meaning giving, and sense-making. Step by step the communicative “monologue” then alters into a conversational “dialogue”, respectively changes into an ongoing common “omnilogue”. These shared values from those joint sources are needed for fundamental renewal and innovation to get Planet, People, and Prosperity as Triple P finally in balance. According to management guru and writer Michael Porter (1947) the central premise behind creating shared value is that the competitiveness of an organization and the health of the communities around it are interdependent: ‘The purpose of the corporation must be redefined as creating shared value, not just profit per se. This will drive the next wave of innovation’. Recognizing these connections between societal purpose and economic prosperity has the potential to unleash a wave of global thriving, instead of solely a novel tsunami of devastating global growth. Transvestment bridges these two: the transfer of value from one dominant system to another autonomous domain.

Masternode.one BV

Corporate HQ EMEA	Research HQ EMEA	Infrastructure NQ EMEA	Infrastructure NQ Americas	Infrastructure NQ APAC	Infrastructure NQ APAC
Euronext AEX Beursplein 5 1012 JW Amsterdam the Netherlands	Javatoren Stationsstraat 11 7607 GX Almelo the Netherlands	Equinix IB Schepenbergweg 42 1105 AT Amsterdam the Netherlands	Digital Reality 111 8th Avenue NY 10011 New York United States of America	NTT Communications Jalan Kuningan Barat No. 8 RT.1/RW.2, West Kuningan Mampang Prapatan Jakarta, Indonesia	AT Tokyo Chuo Data Center 6 Chome-2-12 Koto City Tokyo 135-0061, Japan
<i>info [at] masternode.one</i>	<i>research [at] masternode.one</i>	<i>emea [at] masternode.one</i>	<i>americas [at] masternode.one</i>	<i>apac1 [at] masternode.one</i>	<i>apac2 [at] masternode.one</i>



Transvestment

Software developer and creative thought leader Dmytri Kleiner (1969) is a promoter of commons-based, collaborative, and shared forms of economic distribution and cultural production. His peer-to-peer model allocates capital that is critically needed to accomplish what capitalism cannot: the ongoing proliferation of free culture and free networks. For him, transvestment is a kind of reverse co-optation in which capitalist enterprises become dependent upon the generation of value and values in commons: 'Transvestment is a transfer of value from one mode of production to another. Investment is something that an investor can do that enriches both the investor and the mode of production that the investor is engaging at. Exvestment is something that may enrich the investor but does not enrich the investor's mode of production. Transvestment is the balance of those two. So you can think of transvestment as export and import of value into the commons. And transvestment requires technological disobedience, because the industry as it is, with all the equipment and things that are being produced by the industry, are produced for the interest of capital, so for the capitalists. In order to build systems that do something other than promoting the interests of capitals, we have to use these systems in different ways, in ways they were not intended to be used by industries that produce them. The end-to-end principle means designing things in a way where all the functionalities of the system reside in the end-nodes. So nothing in the middle, full disintermediation. Because profit requires centralization for platforms to earn profit, they need to control user interaction and user data, because that is what their business models are based upon. They better serve the interest of capital. They make it possible for capital to capture profit. The basis of capitalist platforms is the capture of users. Their business model is the sale of audience commodities. In order to overcome these kinds of things, in order to build alternative platforms, we have to address the fundamental problem, and that is capitalism. If we are really busy building alternative systems, we have to think about how productive capacities are spent, and are they for building our communication capacity for social value or for profit?

Masternode.one BV

Corporate HQ EMEA	Research HQ EMEA	Infrastructure NQ EMEA	Infrastructure NQ Americas	Infrastructure NQ APAC	Infrastructure NQ APAC
Euronext AEX Beursplein 5 1012 JW Amsterdam the Netherlands	Javatoren Stationsstraat 11 7607 GX Almelo the Netherlands	Equinix IB Schepenbergweg 42 1105 AT Amsterdam the Netherlands	Digital Reality 111 8th Avenue NY 10011 New York United States of America	NTT Communications Jalan Kuningan Barat No. 8 RT.1/RW.2, West Kuningan Mampang Prapatan Jakarta, Indonesia	AT Tokyo Chuo Data Center 6 Chome-2-12 Koto City Tokyo 135-0061, Japan
<i>info [at] masternode.one</i>	<i>research [at] masternode.one</i>	<i>emea [at] masternode.one</i>	<i>americas [at] masternode.one</i>	<i>apac1 [at] masternode.one</i>	<i>apac2 [at] masternode.one</i>



End-to-end systems have a completely different platform: the more users you have, the more capacity you have, because the actual systems are built based on the distributed resources. So every additional user makes the platform grow and scale. With end-to-end it becomes scalable and it becomes sustainable. We have to think multi-modular: what modes are happening, and what is the structure of modes in the economy? Then, value can go between modes, using transvestment. Transvestment is that balance between investment and exvestment. This is a very helpful way of understanding the transition. Thinking multi-modular helps to understand that we have to build the commons movement, and as technologists we have to use technology in ways that not necessarily follow the interest of the industries and organizations that made them'. So let's choose otherwise: by raising our cognition, by giving more meaning, and by making more sense. For freeing our human world on this natural planet.

Of course, we cannot save the whole world and solve all its challenges. The theories in this chapter only show that new philosophical movements are emerging worldwide that can take the world a step forward and possibly secure the perspective of new generations. We believe that Masternode.one is able to put these theories into practice by building an **infrastructure** to distribute **liquidity** around the world as fairly and efficiently as possible and thereby gain new **insights**.

Masternode.one BV

Corporate HQ EMEA	Research HQ EMEA	Infrastructure NQ EMEA	Infrastructure NQ Americas	Infrastructure NQ APAC	Infrastructure NQ APAC
Euronext AEX Beursplein 5 1012 JW Amsterdam the Netherlands	Javatoren Stationsstraat 11 7607 GX Almelo the Netherlands	Equinix IB Schepenbergweg 42 1105 AT Amsterdam the Netherlands	Digital Reality 111 8th Avenue NY 10011 New York United States of America	NTT Communications Jalan Kuningan Barat No. 8 RT.1/RW.2, West Kuningan Mampang Prapatan Jakarta, Indonesia	AT Tokyo Chuo Data Center 6 Chome-2-12 Koto City Tokyo 135-0061, Japan
<i>info [at] masternode.one</i>	<i>research [at] masternode.one</i>	<i>emea [at] masternode.one</i>	<i>americas [at] masternode.one</i>	<i>apac1 [at] masternode.one</i>	<i>apac2 [at] masternode.one</i>

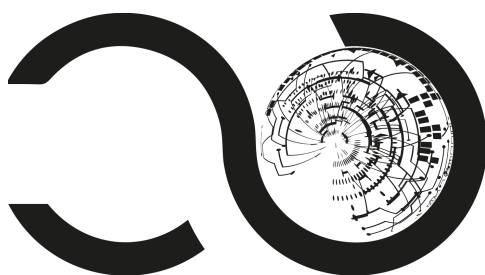


What are we?

We are a thriving proprietary trading, technology, and research company that originates in the Netherlands. Our team consists of highly talented and passionate people with backgrounds in internet technology, sociology, quantitative trading, and media. Carefully brought together to work on our 3 pillars: **infrastructure**, **liquidity** and **insights** that bring us closer to our common thriving:

To distribute wealth more equitably by enhancing the internet of value.

Infrastructure



Because our focus is on decentralized markets, the execution mainly takes place on decentralized networks and protocols, and secondary on centralized exchanges. That is why we maintain our own validator and RPC node infrastructure as the fundament of our proprietary oracle and execution engine to minimize our dependence on third parties and to be able to execute and settle worldwide as efficiently, securely and competitively as possible.

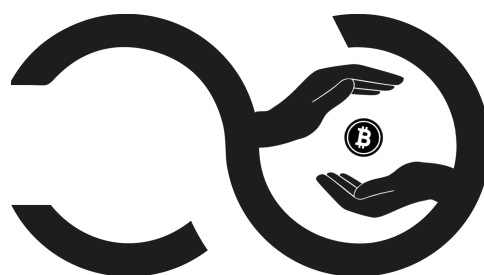
Masternode.one BV

Corporate HQ EMEA	Research HQ EMEA	Infrastructure NQ EMEA	Infrastructure NQ Americas	Infrastructure NQ APAC	Infrastructure NQ APAC
Euronext AEX Beursplein 5 1012 JW Amsterdam the Netherlands	Javatoren Stationsstraat 11 7607 GX Almelo the Netherlands	Equinix IB Schepenbergweg 42 1105 AT Amsterdam the Netherlands	Digital Reality 111 8th Avenue NY 10011 New York United States of America	NTT Communications Jalan Kuningan Barat No. 8 RT.1/RW.2, West Kuningan Mampang Prapatan Jakarta, Indonesia	AT Tokyo Chuo Data Center 6 Chome-2-12 Koto City Tokyo 135-0061, Japan
info [at] masternode.one	research [at] masternode.one	emea [at] masternode.one	americas [at] masternode.one	apac1 [at] masternode.one	apac2 [at] masternode.one

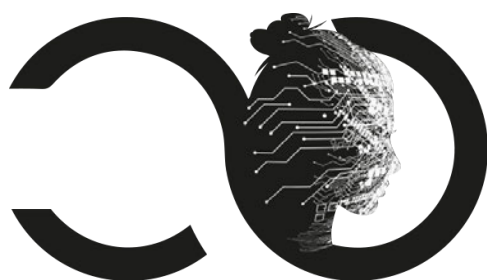


Liquidity

As a market maker, we are constantly iterating our own algorithmic trading strategies using human brain power and machine learning technology. We combine strategies to efficiently provide liquidity to decentralized digital asset markets while satisfying our risk objectives. This allows us to trade our proprietary capital globally and high frequently at minimal cost and distribute liquidity from major central exchanges to less liquid markets on decentralized exchanges, distributing access to wealth more fairly.



Insights



In order to iterate, we need constant insight into our own actions and behavior. Our proprietary data-logging engine allows us to do so. Everything we learn in the process, we make available through online publications, programming interfaces, public datasets, and (quant) tools-as-a-service.

Masternode.one BV

Corporate HQ EMEA	Research HQ EMEA	Infrastructure NQ EMEA	Infrastructure NQ Americas	Infrastructure NQ APAC	Infrastructure NQ APAC
Euronext AEX Beursplein 5 1012 JW Amsterdam the Netherlands	Javatoren Stationsstraat 11 7607 GX Almelo the Netherlands	Equinix IB Schepenbergweg 42 1105 AT Amsterdam the Netherlands	Digital Reality 111 8th Avenue NY 10011 New York United States of America	NTT Communications Jalan Kuningan Barat No. 8 RT.1/RW.2, West Kuningan Mampang Prapatan Jakarta, Indonesia	AT Tokyo Chuo Data Center 6 Chome-2-12 Koto City Tokyo 135-0061, Japan
info [at] masternode.one	research [at] masternode.one	emea [at] masternode.one	americas [at] masternode.one	apac1 [at] masternode.one	apac2 [at] masternode.one



Culture



We don't believe in humans as a resource,
nor do we believe in people as a tradable commodity.
We are not playboys.
We don't care about being billionaires.
We are philanthropists in the purest form.
But above all, we are absolute geniuses.



We just love humanity 3000.

Masternode.one BV

Corporate HQ
EMEA

Euronext AEX
Beursplein 5
1012 JW Amsterdam
the Netherlands

[info \[at\] masternode.one](mailto:info[@]masternode.one)

Research HQ
EMEA

Javatoren
Stationsstraat 11
7607 GX Almelo
the Netherlands

[research \[at\] masternode.one](mailto:research [at] masternode.one)

Infrastructure NQ
EMEA

Equinix IB
Schepenbergweg 42
1105 AT Amsterdam
the Netherlands

[emea \[at\] masternode.one](mailto:emea [at] masternode.one)

Infrastructure NQ
Americas

Digital Reality
111 8th Avenue
NY 10011 New York
United States of America

[americas \[at\] masternode.one](mailto:americas [at] masternode.one)

Infrastructure NQ
APAC

NTT Communications
Jalan Kuningan Barat No. 8 RT.1/RW.2, West
Kuningan Mampang Prapatan
Jakarta, Indonesia

[apac1 \[at\] masternode.one](mailto:apac1 [at] masternode.one)

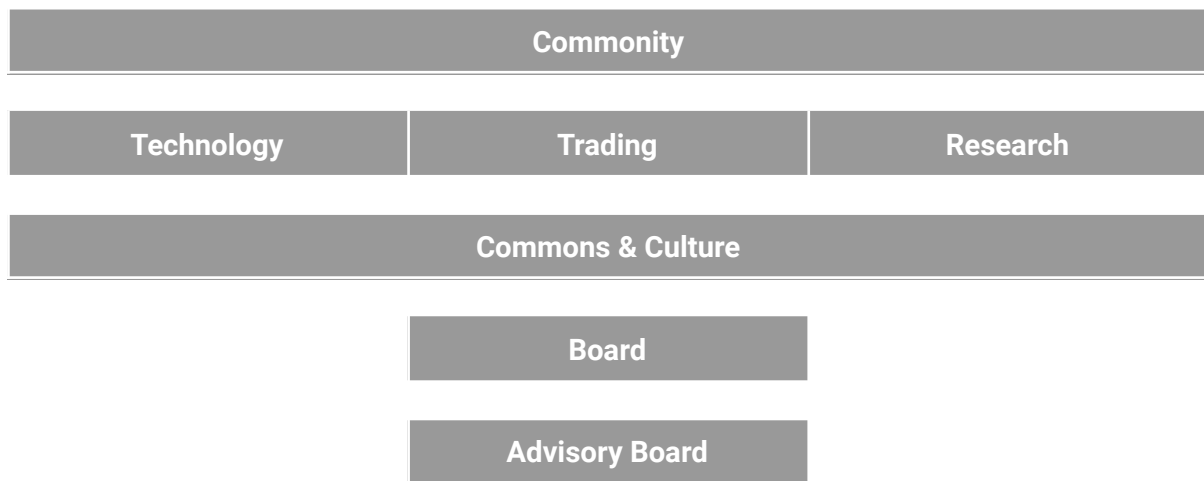
Infrastructure NQ
APAC

AT Tokyo Chuo Data Center
6 Chome-2-12
Koto City
Tokyo 135-0061, Japan

[apac2 \[at\] masternode.one](mailto:apac2 [at] masternode.one)



Structure

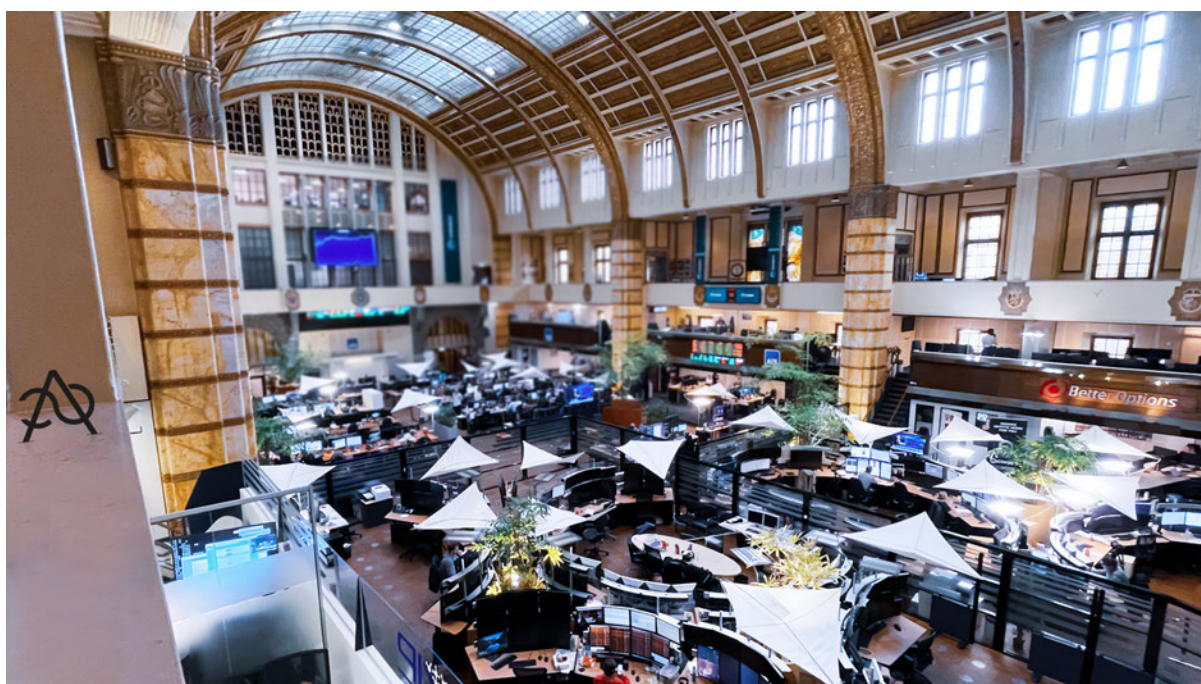


Masternode.one BV

Corporate HQ EMEA	Research HQ EMEA	Infrastructure NQ EMEA	Infrastructure NQ Americas	Infrastructure NQ APAC	Infrastructure NQ APAC
Euronext AEX Beursplein 5 1012 JW Amsterdam the Netherlands	Javatoren Stationsstraat 11 7607 GX Almelo the Netherlands	Equinix IB Schepenbergweg 42 1105 AT Amsterdam the Netherlands	Digital Reality 111 8th Avenue NY 10011 New York United States of America	NTT Communications Jalan Kuningan Barat No. 8 RT.1/RW.2, West Kuningan Mampang Prapatan Jakarta, Indonesia	AT Tokyo Chuo Data Center 6 Chome-2-12 Koto City Tokyo 135-0061, Japan
<i>info [at] masternode.one</i>	<i>research [at] masternode.one</i>	<i>emea [at] masternode.one</i>	<i>americas [at] masternode.one</i>	<i>apac1 [at] masternode.one</i>	<i>apac2 [at] masternode.one</i>



Headquarters Amsterdam, the Netherlands



On May 1, 2022, we established our corporate seat at the Amsterdam Stock Exchange in the Euronext building, the financial heart of the Netherlands. This place is not just any place. It's where the world's first stock ever issued; the share of the VOC.

Masternode.one BV

Corporate HQ EMEA	Research HQ EMEA	Infrastructure NQ EMEA	Infrastructure NQ Americas	Infrastructure NQ APAC	Infrastructure NQ APAC
Euronext AEX Beursplein 5 1012 JW Amsterdam the Netherlands	Javatoren Stationsstraat 11 7607 GX Almelo the Netherlands	Equinix IB Schepenbergweg 42 1105 AT Amsterdam the Netherlands	Digital Reality 111 8th Avenue NY 10011 New York United States of America	NTT Communications Jalan Kuningan Barat No. 8 RT.1/RW.2, West Kuningan Mampang Prapatan Jakarta, Indonesia	AT Tokyo Chuo Data Center 6 Chome-2-12 Koto City Tokyo 135-0061, Japan
info [at] masternode.one	research [at] masternode.one	emea [at] masternode.one	americas [at] masternode.one	apac1 [at] masternode.one	apac2 [at] masternode.one



The birth of stock trading

The Dutch East India Company (VOC), founded in 1602, was the first company in the world to issue shares to a broad public. Before the emergence of the VOC, a limited circle of moneylenders could already participate in financing a single sea voyage. If it was successful, the investors shared in the profit, but if the trip failed, they lost their money. With the VOC, investors from all walks of life were able to invest for the first time in a company that intended to last for many years and that already had many characteristics of a modern public limited company.

The trade in VOC shares took off. With the first issue, the VOC raised 3.3 million “daalders” and the company subsequently grew into the first multinational in the world. By 1606 the shares had already increased in value by 200%; in 1610 the company paid a dividend for the first time. Fairly soon after the first 'IPO', trading was lively and Amsterdam developed into the cradle of global stock trading.

The issuance of tradable shares was a revolutionary development for the 17th century. Investors could sell their securities and then get their money back, while the amount of participation still remained in the company. The VOC literally succeeded in turning 1 daalder (the currency from which the dollar gets its name) into 2 daalders. It is no wonder that other companies at home and abroad soon followed suit. Governments also discovered the benefits of the public capital market. The VOC existed for almost 200 years. In 1799 it was effectively disbanded. The worldwide popularity of IPOs since then means that the VOC is in a sense still very much alive!

In a sense, the VOC contributed, in that zeitgeist, to the distribution of wealth and to making it available to ordinary citizens. However, this manifested itself many years later, unintentionally or not, in a skewed distribution of that same wealth.

Masternode.one BV

Corporate HQ EMEA	Research HQ EMEA	Infrastructure NQ EMEA	Infrastructure NQ Americas	Infrastructure NQ APAC	Infrastructure NQ APAC
Euronext AEX Beursplein 5 1012 JW Amsterdam the Netherlands	Javatoren Stationsstraat 11 7607 GX Almelo the Netherlands	Equinix IB Schepenbergweg 42 1105 AT Amsterdam the Netherlands	Digital Reality 111 8th Avenue NY 10011 New York United States of America	NTT Communications Jalan Kuningan Barat No. 8 RT.1/RW.2, West Kuningan Mampang Prapatan Jakarta, Indonesia	AT Tokyo Chuo Data Center 6 Chome-2-12 Koto City Tokyo 135-0061, Japan
<i>info [at] masternode.one</i>	<i>research [at] masternode.one</i>	<i>emea [at] masternode.one</i>	<i>americas [at] masternode.one</i>	<i>apac1 [at] masternode.one</i>	<i>apac2 [at] masternode.one</i>



400 years later, nanoseconds faster



Back then, stock trading and settlement took multiple days, especially between different exchanges in the world. The transfer of ownership of securities was done manually; the seller had to deliver the stock certificate by mail or in person to the broker representing the buyer. The buyer would not pay the security until the share certificate was received.

It is a strange but wonderful sensation that more than 400 years later this market has evolved into a global equity market where the difference can be made at the nanosecond

via complex worldwide digital infrastructures, protocols, and technologies. Enabling Masternode.one to deal with the latest market developments and instruments; providing orderbook and pool liquidity for digital, decentralized and tokenized assets 24/7 globally in nanoseconds. And it is precisely this that offers us an opportunity to redistribute this wealth across the globe more equitably.

While Amsterdam offers us the creative energy of Dutch entrepreneurship, Euronext offers us the security of a hi-tech, transparent, and regulated trading environment for professional trading.



Masternode.one BV

Corporate HQ EMEA	Research HQ EMEA	Infrastructure NQ EMEA	Infrastructure NQ Americas	Infrastructure NQ APAC	Infrastructure NQ APAC
Euronext AEX Beursplein 5 1012 JW Amsterdam the Netherlands	Javatoren Stationsstraat 11 7607 GX Almelo the Netherlands	Equinix IB Schepenbergweg 42 1105 AT Amsterdam the Netherlands	Digital Reality 111 8th Avenue NY 10011 New York United States of America	NTT Communications Jalan Kuningan Barat No. 8 RT.1/RW.2, West Kuningan Mampang Prapatan Jakarta, Indonesia	AT Tokyo Chuo Data Center 6 Chome-2-12 Koto City Tokyo 135-0061, Japan
info [at] masternode.one	research [at] masternode.one	emea [at] masternode.one	americas [at] masternode.one	apac1 [at] masternode.one	apac2 [at] masternode.one



Research quarters Almelo, the Netherlands



As of June 1, 2022, we have started using our dedicated research center in "de Javatoren" in Almelo. We not only chose "de Javatoren" because of its excellent accessibility (it is less than 150 meters from the Central Station, next to the harbor of Almelo and has ample parking space) but the symbolism behind this location was decisive.

Masternode.one BV

Corporate HQ EMEA	Research HQ EMEA	Infrastructure NQ EMEA	Infrastructure NQ Americas	Infrastructure NQ APAC	Infrastructure NQ APAC
Euronext AEX Beursplein 5 1012 JW Amsterdam the Netherlands	Javatoren Stationsstraat 11 7607 GX Almelo the Netherlands	Equinix IB Schepenbergweg 42 1105 AT Amsterdam the Netherlands	Digital Reality 111 8th Avenue NY 10011 New York United States of America	NTT Communications Jalan Kuningan Barat No. 8 RT.1/RW.2, West Kuningan Mampang Prapatan Jakarta, Indonesia	AT Tokyo Chuo Data Center 6 Chome-2-12 Koto City Tokyo 135-0061, Japan
info [at] masternode.one	research [at] masternode.one	emea [at] masternode.one	americas [at] masternode.one	apac1 [at] masternode.one	apac2 [at] masternode.one



From Java to the JAVA Tower

"De Java-toren" is located on the former Java site, where the cotton from the isle of Java, Jakarta (the birth place and orphanage location of our founder) used to be unloaded by Royal TenCate, and where the processed textiles were loaded for export to the rest of the world. Not only by train or by road, but also by water. The whole site was filled with industry, labor and innovation which lay the foundation of wealth for the modern municipality of Almelo and the eastern part of the Netherlands.



As for the fact that Royal TenCate's corporate management was established in this building, we were therefore immediately enthusiastic when the actual former office of Royal TenCate was offered to us. How nice would it be if we could equally redistribute wealth over the globe from exactly this place? A place where wealth has been amassed for years.

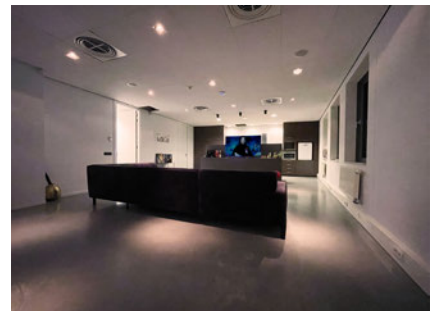
Masternode.one BV

Corporate HQ EMEA	Research HQ EMEA	Infrastructure NQ EMEA	Infrastructure NQ Americas	Infrastructure NQ APAC	Infrastructure NQ APAC
Euronext AEX Beursplein 5 1012 JW Amsterdam the Netherlands	Javatoren Stationsstraat 11 7607 GX Almelo the Netherlands	Equinix IB Schepenbergweg 42 1105 AT Amsterdam the Netherlands	Digital Reality 111 8th Avenue NY 10011 New York United States of America	NTT Communications Jalan Kuningan Barat No. 8 RT.1/RW.2, West Kuningan Mampang Prapatan Jakarta, Indonesia	AT Tokyo Chuo Data Center 6 Chome-2-12 Koto City Tokyo 135-0061, Japan
<i>info [at] masternode.one</i>	<i>research [at] masternode.one</i>	<i>emea [at] masternode.one</i>	<i>americas [at] masternode.one</i>	<i>apac1 [at] masternode.one</i>	<i>apac2 [at] masternode.one</i>

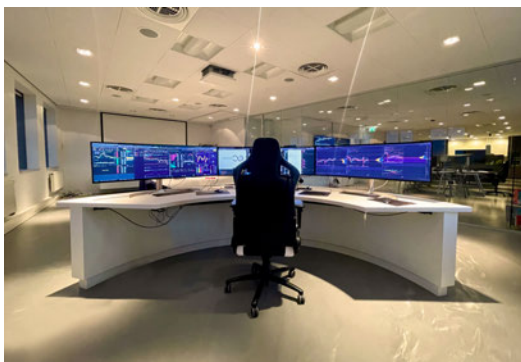


From industrial revolution to circular economy

We have reused as many elements of the old Royal TenCate office as possible in order to contribute as much as possible to a circular economy and thereby reduce our CO2 footprint. This is also one of the reasons why we maintain our own data centers that consist of large (hypervised k8) clusters with refurbished hardware.



Hyper connected, low latency



As the tallest building in Almelo and the surrounding area, "de Java-toren" also makes it ideal for our contribution to the Blockstream satellite network and as the master site for our wireless microwave relay skybridge network that functions as an alternative routing to the various nodeQuarters in the world and keeps the distance between the AMS-IX (The Amsterdam internet node) and the NDIX (the Dutch/German internet node), with our Dutch offices in between, as short and straight as possible.

MasterNode.one BV

Corporate HQ EMEA	Research HQ EMEA	Infrastructure NQ EMEA	Infrastructure NQ Americas	Infrastructure NQ APAC	Infrastructure NQ APAC
Euronext AEX Beursplein 5 1012 JW Amsterdam the Netherlands	Javatoren Stationsstraat 11 7607 GX Almelo the Netherlands	Equinix IB Schepenbergweg 42 1105 AT Amsterdam the Netherlands	Digital Reality 111 8th Avenue NY 10011 New York United States of America	NTT Communications Jalan Kuningan Barat No. 8 RT.1/RW.2, West Kuningan Mampang Prapatan Jakarta, Indonesia	AT Tokyo Chuo Data Center 6 Chome-2-12 Koto City Tokyo 135-0061, Japan
info [@] masternode.one	research [@] masternode.one	emea [@] masternode.one	americas [@] masternode.one	apac1 [@] masternode.one	apac2 [@] masternode.one



Welcome



With spectacular views from the 11th floor, its own restaurant, on-site fitness facilities, its own on-site data center with dedicated fiber optic connections and of course modern desks, a team of on and off-chain researchers, quantitative traders, developers and more connect to enhance the internet of value and distributing wealth more equitably.

Masternode.one BV

Corporate HQ EMEA	Research HQ EMEA	Infrastructure NQ EMEA	Infrastructure NQ Americas	Infrastructure NQ APAC	Infrastructure NQ APAC
Euronext AEX Beursplein 5 1012 JW Amsterdam the Netherlands	Javatoren Stationsstraat 11 7607 GX Almelo the Netherlands	Equinix IB Schepenbergweg 42 1105 AT Amsterdam the Netherlands	Digital Reality 111 8th Avenue NY 10011 New York United States of America	NTT Communications Jalan Kuningan Barat No. 8 RT.1/RW.2, West Kuningan Mampang Prapatan Jakarta, Indonesia	AT Tokyo Chuo Data Center 6 Chome-2-12 Koto City Tokyo 135-0061, Japan
<i>info [at] masternode.one</i>	<i>research [at] masternode.one</i>	<i>emea [at] masternode.one</i>	<i>americas [at] masternode.one</i>	<i>apac1 [at] masternode.one</i>	<i>apac2 [at] masternode.one</i>



Working @ Masternode.one



Working at Masternode.one means working in a digital, entrepreneurial culture of excellence, making a difference on split-second timing. Our proprietary nature means you work without the pressure of external clients or projects, so the quality of your time always takes precedence over quantity. Which enhances your overall professional career.

Our decentralized nature means above all that we believe that you thrive best in your natural habitat and can therefore bear the responsibility of being set free as much as possible to thrive in the challenges that Masternode.one encounters every nanosecond. Every role within the organization is performance driven and fully focused on improving, securing, expanding and optimizing the proprietary infrastructure, liquidity, and insights.



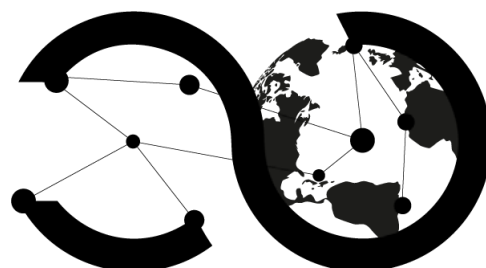
Masternode.one BV

Corporate HQ EMEA	Research HQ EMEA	Infrastructure NQ EMEA	Infrastructure NQ Americas	Infrastructure NQ APAC	Infrastructure NQ APAC
Euronext AEX Beursplein 5 1012 JW Amsterdam the Netherlands	Javatoren Stationsstraat 11 7607 GX Almelo the Netherlands	Equinix IB Schepenbergweg 42 1105 AT Amsterdam the Netherlands	Digital Reality 111 8th Avenue NY 10011 New York United States of America	NTT Communications Jalan Kuningan Barat No. 8 RT.1/RW.2, West Kuningan Mampang Prapatan Jakarta, Indonesia	AT Tokyo Chuo Data Center 6 Chome-2-12 Koto City Tokyo 135-0061, Japan
info @[masternode.one]	research @[masternode.one]	emea @[masternode.one]	americas @[masternode.one]	apac1 @[masternode.one]	apac2 @[masternode.one]



Decentralized

Because we strongly believe in a decentralized world in which freedom is the catalyst for creativity, innovation, and transformation, we work in a decentralized way. In this we facilitate you to be able to work on your challenge within Masternode.one anywhere in the world via our virtual working environment. In addition, we offer physical working environments in the EMEA region for meeting colleagues, collaboration, relaxation, and the exchange of knowledge and skills. But above all, we encourage you to work from the place you call home.



Fringe Benefits



We offer fringe benefits by providing you with your basic equipment as standard, consisting of a MacBook pro, pen & paper, all necessary software (licenses), a mobile phone + subscription, public transport, travel allowances, a workplace design budget, access to our gym, a budget for visiting cultural events, and a educational budget.

Masternode.one BV

Corporate HQ EMEA	Research HQ EMEA	Infrastructure NQ EMEA	Infrastructure NQ Americas	Infrastructure NQ APAC	Infrastructure NQ APAC
Euronext AEX Beursplein 5 1012 JW Amsterdam the Netherlands	Javatoren Stationsstraat 11 7607 GX Almelo the Netherlands	Equinix IB Schepenbergweg 42 1105 AT Amsterdam the Netherlands	Digital Reality 111 8th Avenue NY 10011 New York United States of America	NTT Communications Jalan Kuningan Barat No. 8 RT.1/RW.2, West Kuningan Mampang Prapatan Jakarta, Indonesia	AT Tokyo Chuo Data Center 6 Chome-2-12 Koto City Tokyo 135-0061, Japan
<i>info [at] masternode.one</i>	<i>research [at] masternode.one</i>	<i>emea [at] masternode.one</i>	<i>americas [at] masternode.one</i>	<i>apac1 [at] masternode.one</i>	<i>apac2 [at] masternode.one</i>



Alternative reward structure

However, we are not a regular organization that uses a payroll. Instead, we operate a reward system in stable coins (USDC). Your reward is depending on Masternode.one's [net ALPHA](#) & the multiplier level you achieve in our [trust office foundation](#) (STAK) as a [recommon](#). Your bonus is determined on the basis of an annual evaluation interview in the form of a video call with the person responsible for the Commons & Culture (C&C) of your department. So, you are not employed, but you enjoy the freedom of operating your own business. The unique thing about our reward structure is that your annual reward can be converted into a lifetime reward, when we believe that you have made a significant contribution to Masternode.one and you no longer wish to be professionally active in the digital asset markets. This lifetime reward is subject to a garden-leave process.



Masternode.one BV

Corporate HQ EMEA	Research HQ EMEA	Infrastructure NQ EMEA	Infrastructure NQ Americas	Infrastructure NQ APAC	Infrastructure NQ APAC
Euronext AEX Beursplein 5 1012 JW Amsterdam the Netherlands	Javatoren Stationsstraat 11 7607 GX Almelo the Netherlands	Equinix IB Schepenbergweg 42 1105 AT Amsterdam the Netherlands	Digital Reality 111 8th Avenue NY 10011 New York United States of America	NTT Communications Jalan Kuningan Barat No. 8 RT.1/RW.2, West Kuningan Mampang Prapatan Jakarta, Indonesia	AT Tokyo Chuo Data Center 6 Chome-2-12 Koto City Tokyo 135-0061, Japan
<i>info [at] masternode.one</i>	<i>research [at] masternode.one</i>	<i>emea [at] masternode.one</i>	<i>americas [at] masternode.one</i>	<i>apac1 [at] masternode.one</i>	<i>apac2 [at] masternode.one</i>



The application application



Your application starts with the apply button next to the desired vacancy in the career section of our [website](#). This button redirects you to a test that you have to complete under time pressure. When the button is grayed out, the vacancy is closed. The test consists of a general part and a part specifically tailored to your working field. When you pass the test, you can choose a date and time in the agenda for an application interview in the form of a video call with the person responsible for Commons & Culture (C&C) of your department. During this conversation there is

mainly room to answer questions from your side, we also try to discover whether you fit into our culture. Within 1 week after the video call you will be informed by email whether you will continue your Masternode.one journey or why not.

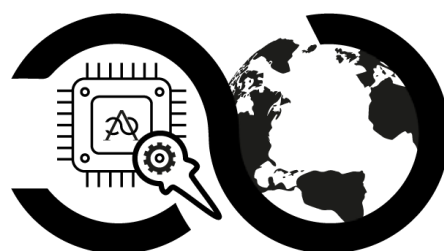
Masternode.one BV

Corporate HQ EMEA	Research HQ EMEA	Infrastructure NQ EMEA	Infrastructure NQ Americas	Infrastructure NQ APAC	Infrastructure NQ APAC
Euronext AEX Beursplein 5 1012 JW Amsterdam the Netherlands	Javatoren Stationsstraat 11 7607 GX Almelo the Netherlands	Equinix IB Schepenbergweg 42 1105 AT Amsterdam the Netherlands	Digital Reality 111 8th Avenue NY 10011 New York United States of America	NTT Communications Jalan Kuningan Barat No. 8 RT.1/RW.2, West Kuningan Mampang Prapatan Jakarta, Indonesia	AT Tokyo Chuo Data Center 6 Chome-2-12 Koto City Tokyo 135-0061, Japan
<i>info [at] masternode.one</i>	<i>research [at] masternode.one</i>	<i>emea [at] masternode.one</i>	<i>americas [at] masternode.one</i>	<i>apac1 [at] masternode.one</i>	<i>apac2 [at] masternode.one</i>



Your first week, onboarding

In the 1st week we expect you to see Masternode.one purely as a playground and learning area. You get access to our systems and snoop around there. You also get access to our e-learning environment, in which you have to complete at least 4 basic courses. These basic courses mainly relate to our operations, business goals, execution engine, and (pricing/risk) strategies. In addition, you set up your own workplace, the necessary software, and tooling.



Your second week, discovery



In the 2nd week you really get to know Masternode.one, its culture and its people. During this week you are expected to have a video call with at least 6 different people, each with different disciplines in the organization. You prepare the video call with a short text in which you introduce yourself and a questionnaire from your side, which you send together with the invitation for the video call to the persons you want to know more about.

Masternode.one BV

Corporate HQ EMEA	Research HQ EMEA	Infrastructure NQ EMEA	Infrastructure NQ Americas	Infrastructure NQ APAC	Infrastructure NQ APAC
Euronext AEX Beursplein 5 1012 JW Amsterdam the Netherlands	Javatoren Stationsstraat 11 7607 GX Almelo the Netherlands	Equinix IB Schepenbergweg 42 1105 AT Amsterdam the Netherlands	Digital Reality 111 8th Avenue NY 10011 New York United States of America	NTT Communications Jalan Kuningan Barat No. 8 RT.1/RW.2, West Kuningan Mampang Prapatan Jakarta, Indonesia	AT Tokyo Chuo Data Center 6 Chome-2-12 Koto City Tokyo 135-0061, Japan
<i>info [at] masternode.one</i>	<i>research [at] masternode.one</i>	<i>emea [at] masternode.one</i>	<i>americas [at] masternode.one</i>	<i>apac1 [at] masternode.one</i>	<i>apac2 [at] masternode.one</i>



Your third week, go!

In the 3rd week you actually start your challenge at Masternode.one. Each day of this week and the next will conclude with a short evaluation video call with your department's Commons & Culture (C&C) manager. With this we try to make you as familiar as possible with our organization and challenges to remove obstacles so that the chance of a significant contribution from you to Masternode.one and the associated lifetime reward is as great as possible. After these 3 weeks, the retention of the video calls is reduced to once a month. You maintain further communication with close colleagues via the Masternode.one slack.



Don't worry, we are aware that there is no education or commercial training for the positions we are looking for. That is why we are mainly looking for passionate people who can handle the learning-by-doing responsibility. During your time at Masternode.one you will work intensively with your close colleagues from all over the world, learn from them, get to know them better through the live events. Be inspired and motivated by working in a new turbulent and continuously changing market at an organization that continuously operates on the edge of technological innovation and personal transformation to distribute wealth more equitable.

Masternode.one BV

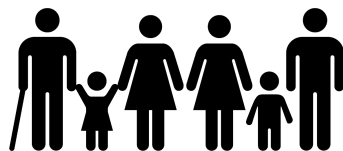
Corporate HQ EMEA	Research HQ EMEA	Infrastructure NQ EMEA	Infrastructure NQ Americas	Infrastructure NQ APAC	Infrastructure NQ APAC
Euronext AEX Beursplein 5 1012 JW Amsterdam the Netherlands	Javatoren Stationsstraat 11 7607 GX Almelo the Netherlands	Equinix IB Schepenbergweg 42 1105 AT Amsterdam the Netherlands	Digital Reality 111 8th Avenue NY 10011 New York United States of America	NTT Communications Jalan Kuningan Barat No. 8 RT.1/RW.2, West Kuningan Mampang Prapatan Jakarta, Indonesia	AT Tokyo Chuo Data Center 6 Chome-2-12 Koto City Tokyo 135-0061, Japan
<i>info [at] masternode.one</i>	<i>research [at] masternode.one</i>	<i>emea [at] masternode.one</i>	<i>americas [at] masternode.one</i>	<i>apac1 [at] masternode.one</i>	<i>apac2 [at] masternode.one</i>



SDG #1, no poverty

Because of the reason Masternode.one was founded in the first place, we are deeply committed to the plight of people living below the poverty line. That is why we are committed to [Sustainable Development Goal #1: no poverty](#), as defined by the United Nations. We actively contribute to this goal by donating a significant part of our total yearly net profit to foundations that have proven themselves and are still committed to this goal. In addition, we actively participate in charitable events in this area and we make our people, knowledge and skills available for this. In addition, we invest and participate in companies and projects whose main mission is to achieve this goal.

Introduce us to your activity



Do you have a project, company, or event that actively contributes to SDG #1? Let us know by filling out the form on our website and we will contact you to see how Masternode.one can help you to improve your ability to eradicate poverty. Rest assured, you don't have to be a large international organization. In fact, we favor local initiatives with a direct positive impact on SDG #1.

Masternode.one BV

Corporate HQ EMEA	Research HQ EMEA	Infrastructure NQ EMEA	Infrastructure NQ Americas	Infrastructure NQ APAC	Infrastructure NQ APAC
Euronext AEX Beursplein 5 1012 JW Amsterdam the Netherlands	Javatoren Stationsstraat 11 7607 GX Almelo the Netherlands	Equinix IB Schepenbergweg 42 1105 AT Amsterdam the Netherlands	Digital Reality 111 8th Avenue NY 10011 New York United States of America	NTT Communications Jalan Kuningan Barat No. 8 RT.1/RW.2, West Kuningan Mampang Prapatan Jakarta, Indonesia	AT Tokyo Chuo Data Center 6 Chome-2-12 Koto City Tokyo 135-0061, Japan
info [at] masternode.one	research [at] masternode.one	emea [at] masternode.one	americas [at] masternode.one	apac1 [at] masternode.one	apac2 [at] masternode.one





We already support the following activities

	<p>Amani for Africa</p> <p>Amani for Africa actively supports hundreds of children and young people in the suburbs of large cities in sub-Saharan Africa living alone in the street, away from their families, in constant danger and without the hope of a future.</p>
	<p>Think volunteer</p> <p>Founded in Indonesia, Think Volunteer is committed to motivating international travel and volunteering in developing countries with positive impact and counteracting negative impact.</p>

Masternode.one BV

Corporate HQ EMEA	Research HQ EMEA	Infrastructure NQ EMEA	Infrastructure NQ Americas	Infrastructure NQ APAC	Infrastructure NQ APAC
Euronext AEX Beursplein 5 1012 JW Amsterdam the Netherlands	Javatoren Stationsstraat 11 7607 GX Almelo the Netherlands	Equinix IB Schepenbergweg 42 1105 AT Amsterdam the Netherlands	Digital Reality 111 8th Avenue NY 10011 New York United States of America	NTT Communications Jalan Kuningan Barat No. 8 RT.1/RW.2, West Kuningan Mampang Prapatan Jakarta, Indonesia	AT Tokyo Chuo Data Center 6 Chome-2-12 Koto City Tokyo 135-0061, Japan
info [at] masternode.one	research [at] masternode.one	emea [at] masternode.one	americas [at] masternode.one	apac1 [at] masternode.one	apac2 [at] masternode.one



	<p>National Association de Zonnebloem</p> <p>National Association de Zonnebloem is a Dutch national volunteer organization that is committed to people with physical limitations due to illness, age or disability. With more than 38,000 volunteers in 2017, it is one of the largest volunteer organizations in the Netherlands.</p>
	<p>No Guts, No glory</p> <p>No Guts No Glory Foundation makes special experiences and wishes possible for people with cancer and their carers. Because they believe in the power of music, many activities have a musical character.</p>

Masternode.one BV

Corporate HQ EMEA	Research HQ EMEA	Infrastructure NQ EMEA	Infrastructure NQ Americas	Infrastructure NQ APAC	Infrastructure NQ APAC
Euronext AEX Beursplein 5 1012 JW Amsterdam the Netherlands	Javatoren Stationsstraat 11 7607 GX Almelo the Netherlands	Equinix IB Schepenbergweg 42 1105 AT Amsterdam the Netherlands	Digital Reality 111 8th Avenue NY 10011 New York United States of America	NTT Communications Jalan Kuningan Barat No. 8 RT.1/RW.2, West Kuningan Mampang Prapatan Jakarta, Indonesia	AT Tokyo Chuo Data Center 6 Chome-2-12 Koto City Tokyo 135-0061, Japan
info [at] masternode.one	research [at] masternode.one	emea [at] masternode.one	americas [at] masternode.one	apac1 [at] masternode.one	apac2 [at] masternode.one



A word from Think Volunteer...



Mirthe Kroezen, founder and director of charity organization Think Volunteer, wrote an article about their cooperation with Masternode.one.

Masternode.one BV

Corporate HQ EMEA	Research HQ EMEA	Infrastructure NQ EMEA	Infrastructure NQ Americas	Infrastructure NQ APAC	Infrastructure NQ APAC
Euronext AEX Beursplein 5 1012 JW Amsterdam the Netherlands	Javatoren Stationsstraat 11 7607 GX Almelo the Netherlands	Equinix IB Schepenbergweg 42 1105 AT Amsterdam the Netherlands	Digital Reality 111 8th Avenue NY 10011 New York United States of America	NTT Communications Jalan Kuningan Barat No. 8 RT.1/RW.2, West Kuningan Mampang Prapatan Jakarta, Indonesia	AT Tokyo Chuo Data Center 6 Chome-2-12 Koto City Tokyo 135-0061, Japan
info [redacted] masternode.one	research [redacted] masternode.one	emea [redacted] masternode.one	americas [redacted] masternode.one	apac1 [redacted] masternode.one	apac2 [redacted] masternode.one



Masternode.one supports the Think Volunteer Foundation

We, from Think Volunteer, are grateful for the fact that Masternode.one has donated to support our movement "Give a voice to the locals".

Think Volunteer



The Think Volunteer Foundation wants to help travelers and volunteers to give good intentions abroad, such as volunteering with vulnerable children, a good ending. In recent years, we have seen many volunteers work in places such as orphanages and shelters with vulnerable children. The help of the volunteers offers local organizations the opportunity to receive "free" support. Unfortunately, this well-intentioned aid does not always have a positive effect on the children and the environment itself. The current problem is that travelers often don't get the right preparation and tools they need to make a positive impact internationally. To bring positive change and overcome the ethical

issues, such as children with attachment problems and arguments against volunteer tourism, we need volunteers and travelers that are well prepared, have the right expectations, and act responsibly. The solution to this issue lies in education and connection: the perspectives of local projects, organizations, and experts must be heard.

Masternode.one BV

Corporate HQ EMEA	Research HQ EMEA	Infrastructure NQ EMEA	Infrastructure NQ Americas	Infrastructure NQ APAC	Infrastructure NQ APAC
Euronext AEX Beursplein 5 1012 JW Amsterdam the Netherlands	Javatoren Stationsstraat 11 7607 GX Almelo the Netherlands	Equinix IB Schepenbergweg 42 1105 AT Amsterdam the Netherlands	Digital Reality 111 8th Avenue NY 10011 New York United States of America	NTT Communications Jalan Kuningan Barat No. 8 RT.1/RW.2, West Kuningan Mampang Prapatan Jakarta, Indonesia	AT Tokyo Chuo Data Center 6 Chome-2-12 Koto City Tokyo 135-0061, Japan
<i>info [at] masternode.one</i>	<i>research [at] masternode.one</i>	<i>emea [at] masternode.one</i>	<i>americas [at] masternode.one</i>	<i>apac1 [at] masternode.one</i>	<i>apac2 [at] masternode.one</i>



Think Volunteer Academy

We are currently building a platform where travelers can learn from each other, experts and experiential experts. The '[Think Volunteer Academy](#)' will be the place where travelers can get information about responsible travel and volunteering.

On the Think Volunteer Academy platform, travelers and volunteers can follow various courses and make use of a certified coach, appropriate to their purpose. The platform offers alternatives, tips, solutions, and education about culture & faith, sustainable impact, ethics & dilemmas, animals & nature, and working with vulnerable target groups abroad. Furthermore, the users of the Think Volunteer Academy are also informed about many travel elements with a negative impact, such as the consequences of riding elephants.

Cryptocurrency and our platform

On our platform, we will accept travelers and volunteers from all over the world. We will motivate them to start their own charity project and raise funds for the project they are going to contribute to. Accepting cryptocurrency as a payment and using cryptocurrency has several benefits especially because we work internationally. By using crypto, we do not have extra 'international' costs because we use the same exchange rate. Payments are made via modern digital technology (blockchain). This makes it safe and reliable. More and more payment services, such as PayPal, also accept cryptos for payment. When we accept and use cryptocurrency, it will increase the accessibility of our platform because we will receive and pay fees and donations without the intervention of third parties such as banks.

Masternode.one BV

Corporate HQ EMEA	Research HQ EMEA	Infrastructure NQ EMEA	Infrastructure NQ Americas	Infrastructure NQ APAC	Infrastructure NQ APAC
Euronext AEX Beursplein 5 1012 JW Amsterdam the Netherlands	Javatoren Stationsstraat 11 7607 GX Almelo the Netherlands	Equinix IB Schepenbergweg 42 1105 AT Amsterdam the Netherlands	Digital Reality 111 8th Avenue NY 10011 New York United States of America	NTT Communications Jalan Kuningan Barat No. 8 RT.1/RW.2, West Kuningan Mampang Prapatan Jakarta, Indonesia	AT Tokyo Chuo Data Center 6 Chome-2-12 Koto City Tokyo 135-0061, Japan
<i>info [at] masternode.one</i>	<i>research [at] masternode.one</i>	<i>emea [at] masternode.one</i>	<i>americas [at] masternode.one</i>	<i>apac1 [at] masternode.one</i>	<i>apac2 [at] masternode.one</i>



Support

What can we all do with the donation? The answer is simple: a lot! We could use the amount to pay for platform hosting costs or to cover the expenses of our dedicated volunteers. Nonetheless, we decided to invest the funds in something that will benefit the Think Volunteer Academy in the long run, namely skills and knowledge! With the donation, we can register for the platform "De nieuwe gevers". This platform is a community in which we can find experienced professionals who want to donate their experience and skills to help us as a (young) organization. With this amount, we can make use of experts for a year who can help our foundation with, for example, the strategy, growth plans, and optimizing our platform. Thanks to the donation, we can ensure that the continuity of Think Volunteer is guaranteed. The Think Volunteer Academy provides a self-sufficient and sustainable model, with the ultimate goal of having a positive impact on all travel worldwide!

*Do you want to follow our adventure further?
Check out our [website](#) or follow us on [instagram](#) and [youtube](#)!*

<https://www.youtube.com/watch?v=hb3fk4mrGdM>

Masternode.one BV

Corporate HQ EMEA	Research HQ EMEA	Infrastructure NQ EMEA	Infrastructure NQ Americas	Infrastructure NQ APAC	Infrastructure NQ APAC
Euronext AEX Beursplein 5 1012 JW Amsterdam the Netherlands	Javatoren Stationsstraat 11 7607 GX Almelo the Netherlands	Equinix IB Schepenbergweg 42 1105 AT Amsterdam the Netherlands	Digital Reality 111 8th Avenue NY 10011 New York United States of America	NTT Communications Jalan Kuningan Barat No. 8 RT.1/RW.2, West Kuningan Mampang Prapatan Jakarta, Indonesia	AT Tokyo Chuo Data Center 6 Chome-2-12 Koto City Tokyo 135-0061, Japan
<i>info [at] masternode.one</i>	<i>research [at] masternode.one</i>	<i>emea [at] masternode.one</i>	<i>americas [at] masternode.one</i>	<i>apac1 [at] masternode.one</i>	<i>apac2 [at] masternode.one</i>



TO END POVERTY

Once upon a time,

Saturday February 12, 1983 to be exact. Made us do it...



So that no mother
ever has to give up her child,
because of poverty reasons

Masternode.one BV

Corporate HQ EMEA	Research HQ EMEA	Infrastructure NQ EMEA	Infrastructure NQ Americas	Infrastructure NQ APAC	Infrastructure NQ APAC
Euronext AEX Beursplein 5 1012 JW Amsterdam the Netherlands	Javatoren Stationsstraat 11 7607 GX Almelo the Netherlands	Equinix IB Schepenbergweg 42 1105 AT Amsterdam the Netherlands	Digital Reality 111 8th Avenue NY 10011 New York United States of America	NTT Communications Jalan Kuningan Barat No. 8 RT.1/RW.2, West Kuningan Mampang Prapatan Jakarta, Indonesia	AT Tokyo Chuo Data Center 6 Chome-2-12 Koto City Tokyo 135-0061, Japan
<i>info [at] masternode.one</i>	<i>research [at] masternode.one</i>	<i>emea [at] masternode.one</i>	<i>americas [at] masternode.one</i>	<i>apac1 [at] masternode.one</i>	<i>apac2 [at] masternode.one</i>

KvK 54452996 - Btw NL851311222B01 - <https://masternode.one>



...

Kind regards,

Frank Oonk

Founder

MasterNode.one BV

Corporate HQ EMEA	Research HQ EMEA	Infrastructure NQ EMEA	Infrastructure NQ Americas	Infrastructure NQ APAC	Infrastructure NQ APAC
Euronext AEX Beursplein 5 1012 JW Amsterdam the Netherlands	Javatoren Stationsstraat 11 7607 GX Almelo the Netherlands	Equinix IB Schepenbergweg 42 1105 AT Amsterdam the Netherlands	Digital Reality 111 8th Avenue NY 10011 New York United States of America	NTT Communications Jalan Kuningan Barat No. 8 RT.1/RW.2, West Kuningan Mampang Prapatan Jakarta, Indonesia	AT Tokyo Chuo Data Center 6 Chome-2-12 Koto City Tokyo 135-0061, Japan
<i>info [at] masternode.one</i>	<i>research [at] masternode.one</i>	<i>emea [at] masternode.one</i>	<i>americas [at] masternode.one</i>	<i>apac1 [at] masternode.one</i>	<i>apac2 [at] masternode.one</i>